

A map of the Rio Grande Valley Metropolitan Planning Area (RGVMPO) is shown in the background. The map features a network of roads and highways, with several routes highlighted by dashed black lines. These routes include US-83, SR-3167, SR-1017, SR-681, SR-107, SR-281, SR-506, SR-345, SR-100, and I-69C. The map also shows the Rio Grande river and the Gulf of Mexico coastline. The text "RGVMPO Performance Management Framework" is overlaid on the map in a large, white, sans-serif font.

# RGVMPO Performance Management Framework

Scoring Process and Criteria Workshop

8/8/2023





# Agenda

---

- Introductions
- Performance Management - What it is and Why we do it.
- Who is affected
- Development and Implementation
- Current Required Performance Goals
- MTP Goals
- Project Scoring Process, Criteria, and Documentation Review
- Debrief



# Performance Management – *What it is and Why we do it.*

---



**Performance Management is a business strategy that:**

- Is systematically and regularly applied
- Communicates key information to decision makers to understand impacts of investments.



**We carry out Performance Management in order to**

- Improve communications between decision makers, stakeholders and the traveling public
- Ensure required targets and measures are being used



# Performance Management – *What it is and Why we do it.*

---

## It's Required

- Federal transportation bills Moving Ahead for Progress-21st Century (MAP-21) and Fixing America's Surface Transportation (FAST Act) establish requirements for Metropolitan Planning Organizations (MPOs) to conduct performance-based planning and focus on achieving performance outcomes.
- Carried out through 23 C.F.R Parts 450 and 490



# Performance Management – *What it is and Why we do it.*

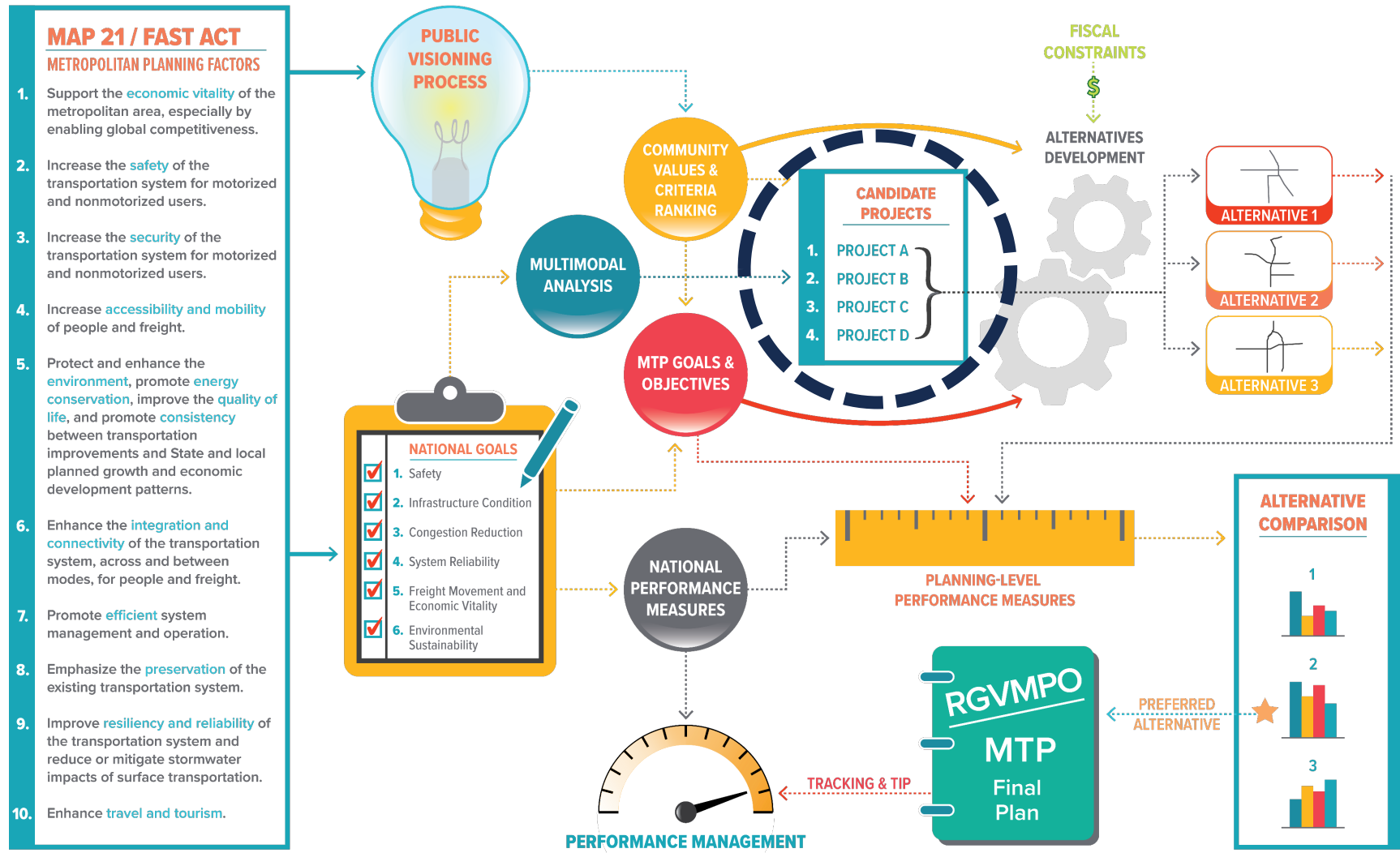
---

## It's Required

- Bipartisan Infrastructure Law (BIL) continues this and adds requirements for MPOs > 200k to have competitive process to allow eligible entities to submit projects.\*

# Performance Management – *What it is and Why we do it.*

## PERFORMANCE-BASED PLANNING PROCESS

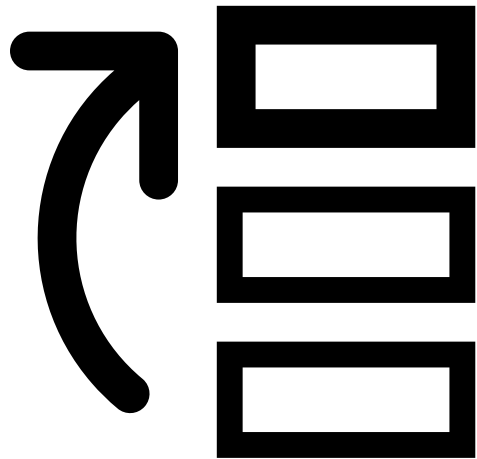


- Project prioritization, project selection, and programming are an integral part of performance management



# Performance Management – *What it is and Why we do it.*

---



**Project prioritization and project delivery are two very different processes.**



# Applicable National Performance Measures

National Goal	Performance Measures
Safety	Number of fatalities
	Fatality rate
	Number of serious injuries
	Rate of serious injuries
	Number of non-motorized fatalities and non-motorized serious injuries
Infrastructure	Percentage of pavements of the Interstate System in Good condition
	Percentage of pavements of the Interstate System in Poor condition
	Percentage of pavements of the non-Interstate NHS in Good condition
	Percentage of pavements of the non-Interstate NHS in Poor condition
	Percentage of NHS bridges classified as in Good condition
	Percentage of NHS bridges classified as in Poor condition
System Performance	Percent of the person-miles traveled on the Interstate that are reliable
	Percent of the person-miles traveled on the non-Interstate NHS that are reliable
	Truck Travel Time Reliability (TTTR) Index



# TxDOT Strategic Plan Goals

Strategic Plan Goal	Performance Measures
Promote Safety	Fatalities/Year
	Fatality Rate
Preserve Our Assets	Pavement Condition
	Statewide Bridge Condition Score
Optimize System Performance	Urban Congestion
	Rural Reliability Index

# Established MTP Goals

---

- Regional planning
- Safety
- Security
- Asset Management
- Efficient System
- Sustainable System
- Connectivity
- Mobility and Accessibility
- Economic Growth
- Environment
- Fiscal Responsibility in Improvements
- Align With the Public Values

# Using Goals to Inform Scoring Criteria

---

## **Example: Regional Planning**

Does the project build a sense of regional identity and community by being inclusive of all geographic areas and sensitive to needs of communities across the region while promoting the theme of regional collaboration?

Examples of regional planning include the following:

- Project is in a regional plan.
- Project involves multiple jurisdictions.
- Project is in partnership with another agency.

# Using Goals to Inform Scoring Criteria

---

## Example: Safety

Does the project develop and invest in projects that promote and improve system safety?

*Example assessment method questions:*

- *Is the project in a hot spot?*
- *What kind of crashes occur at this location?*
- *Does the project/improvement/intervention address the concern?*

*Participants would score a project by how well the improvement will address system safety.*

Examples of improved safety include the following:

- Reduction in the number of automobile crashes.
- Reduction in the number of crashes involving non-motorized users.

# Using Goals to Inform Scoring Criteria

---

## Example: Asset Management

Does the project maintain asset systems in states of good repair?

*Example assessment method questions:*

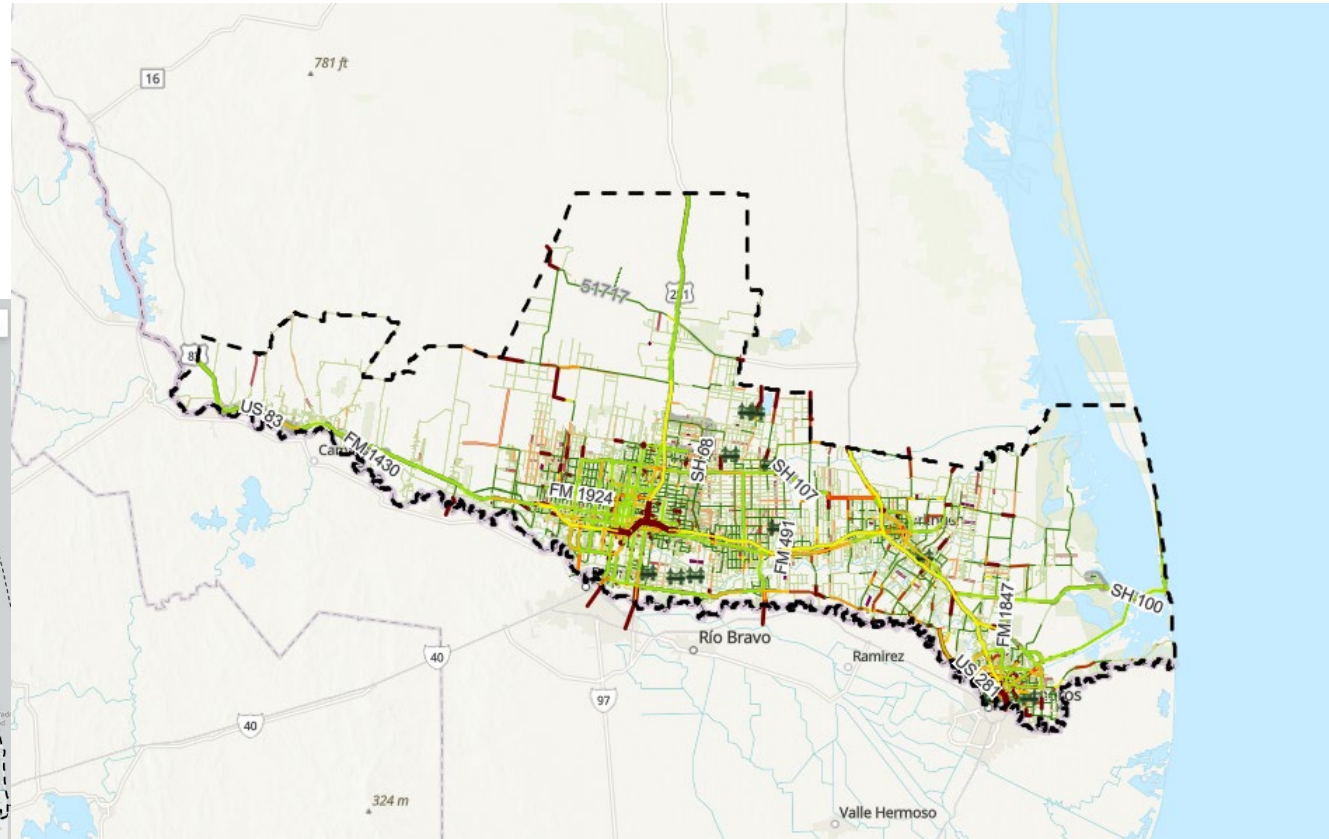
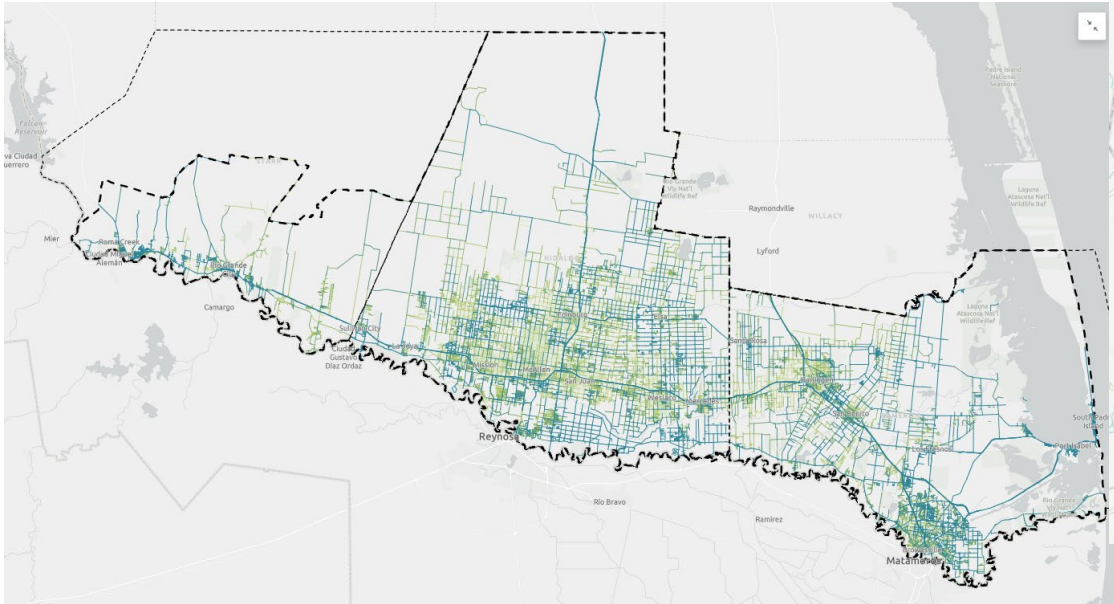
- *Is the project on a segment or a facility in poor or fair condition?*
- *Does the improvement improve the overall state of good repair of the facility?*
- *Does the project add new facilities, thus overall improving the state of good repair?*
- *Is the project on a local transit route?*

Examples of improved asset management include the following:

- Improved pavement or bridge conditions.
- Improved bike lanes.
- Improved transit facilities, vehicles, or transit routes.

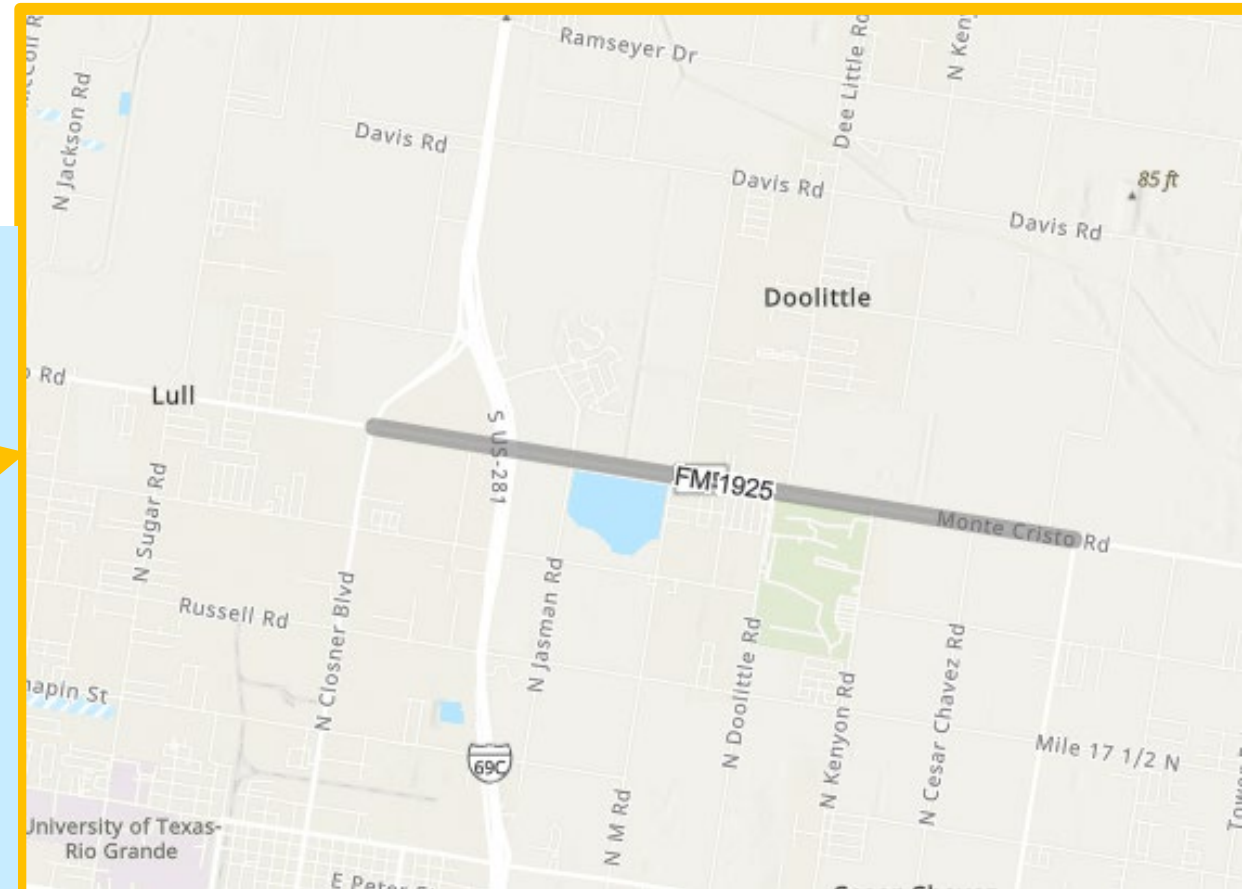
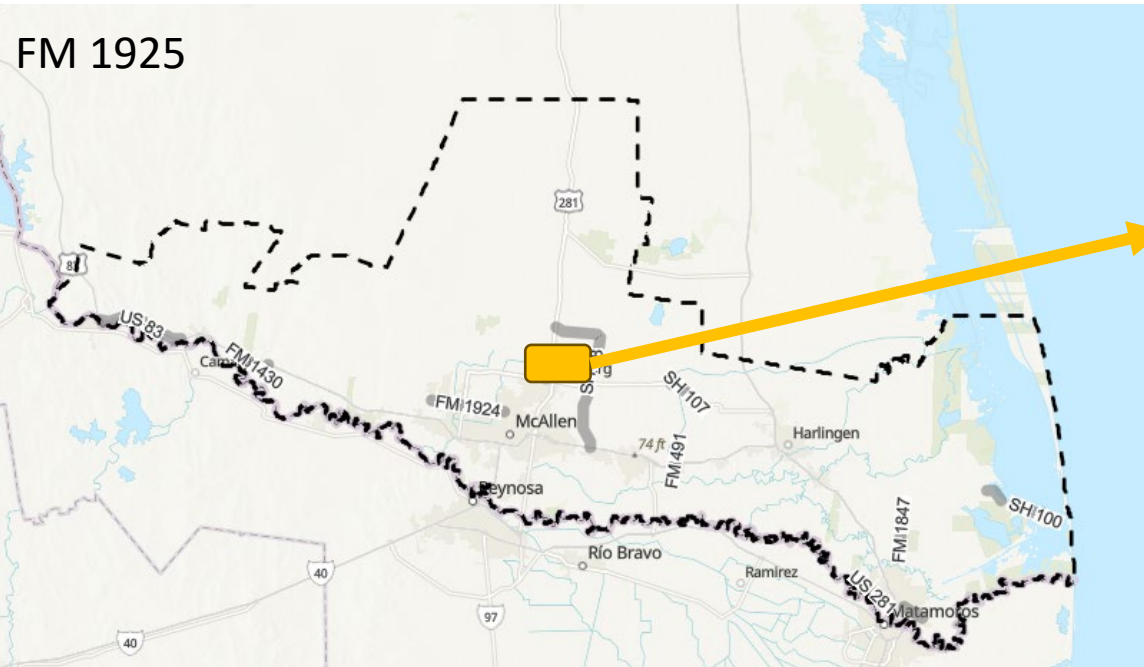
# Using Data Where Possible

- Online Map – PM, PM(2), and PM(3)
- Online Map – Resiliency Network

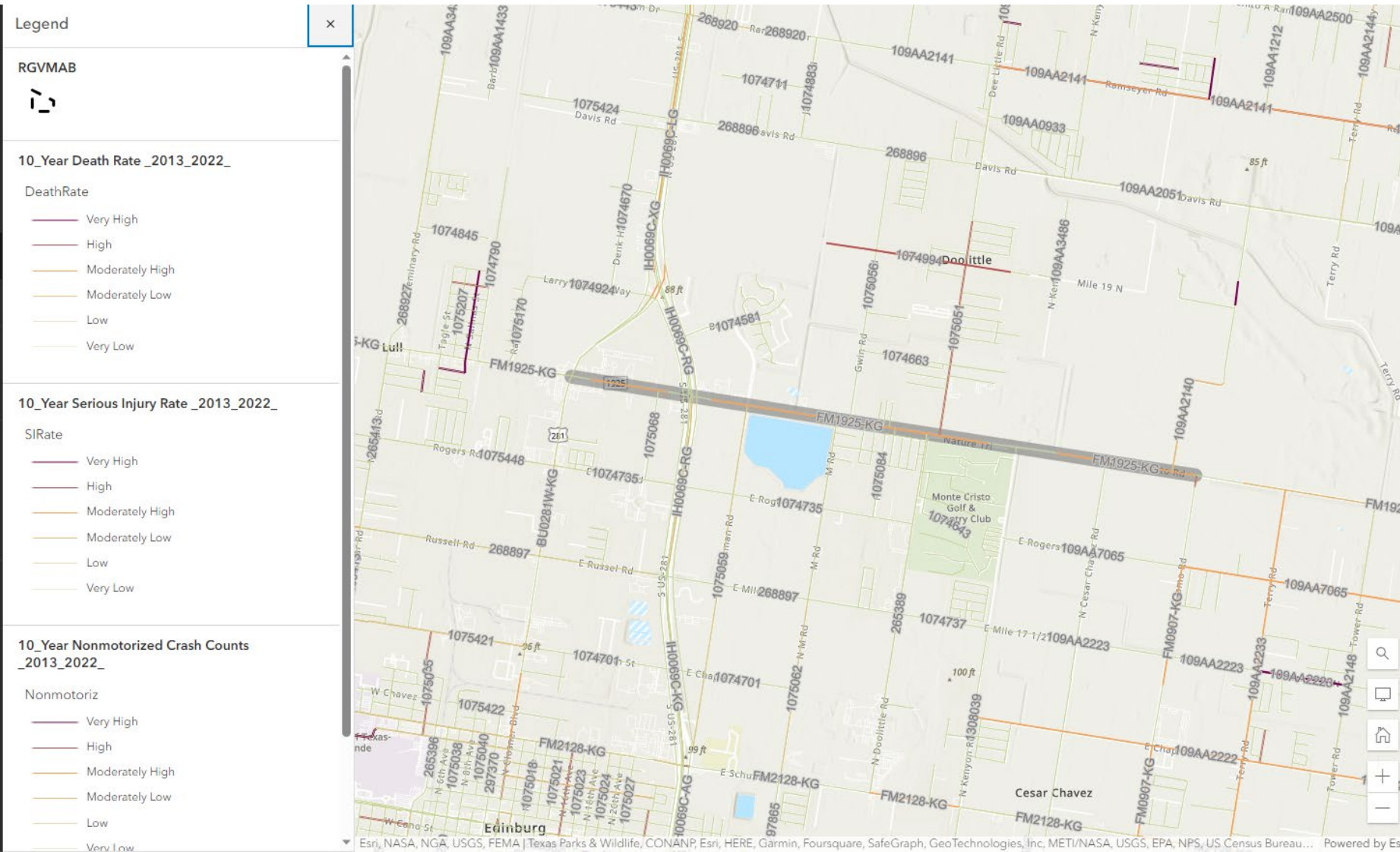


# Using Data Where Possible

Example Projects: FM 1925 in Edinburg and FM 1847 in Brownsville/Olmito



# Using Data Where Possible; Safety Example



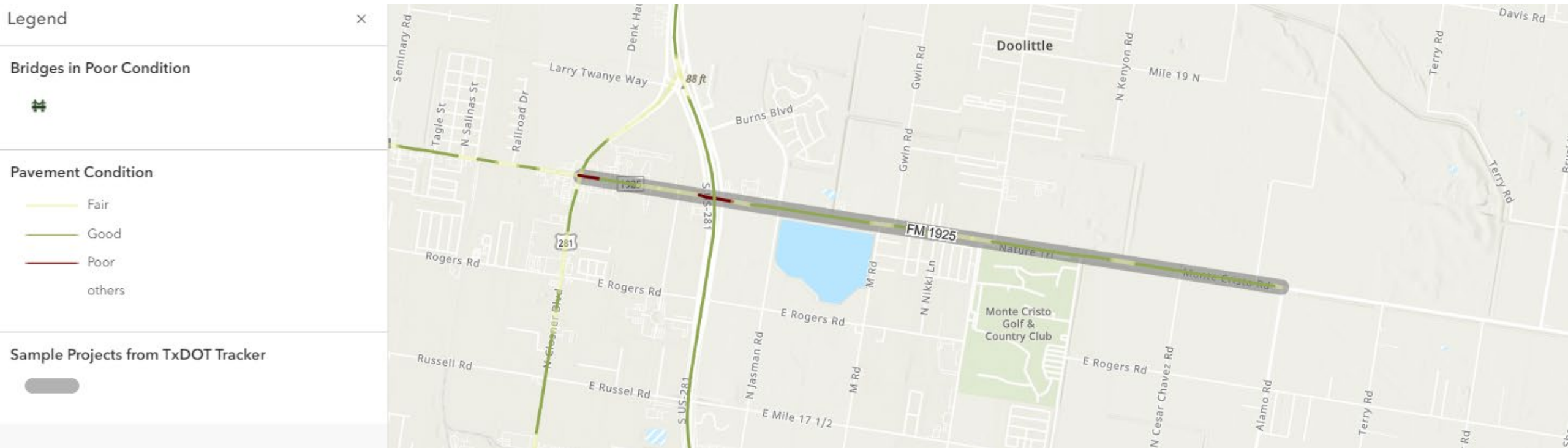
## Safety on FM 1925

Crash Rate	1.584400
Fatality Rate	0.031067
Serious Injury Rate	0.054367
Rate	

# Using Data Where Possible; SGR Example

## State of Good Repair on FM 1925

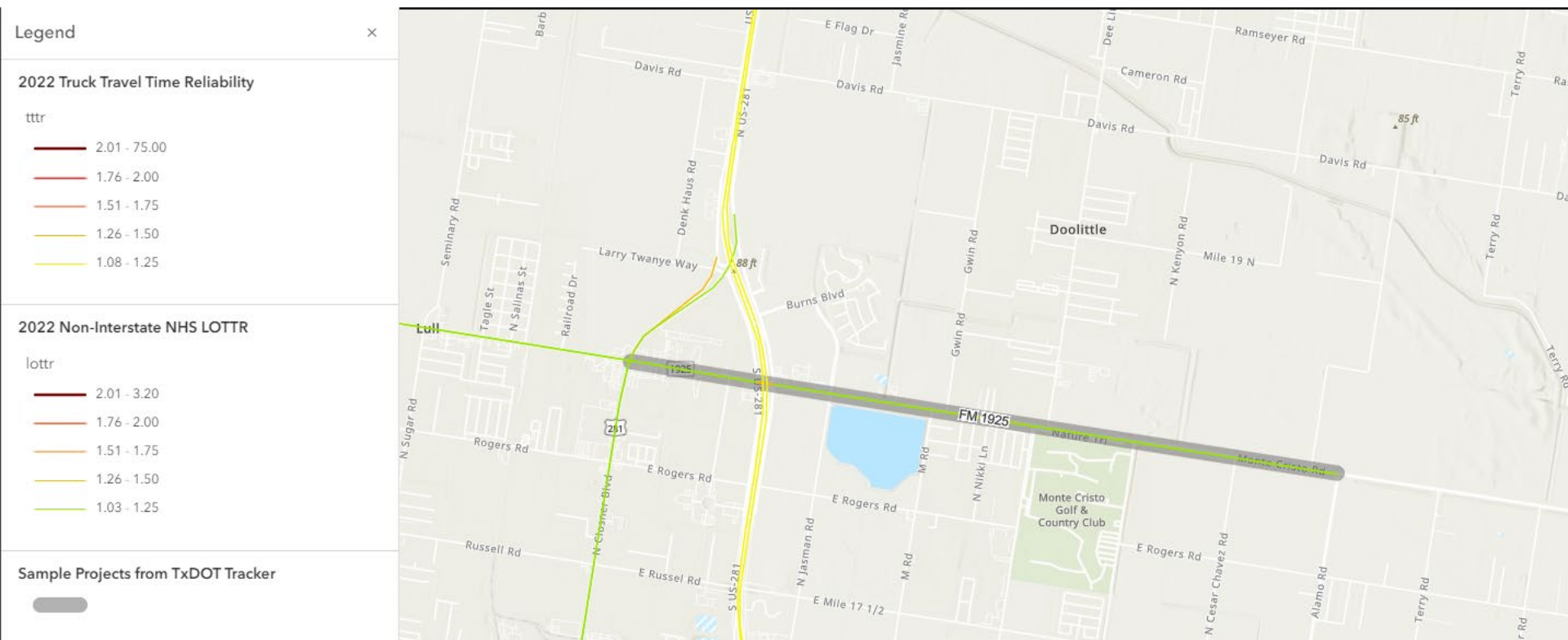
Two segments in Poor Condition. Some segments in fair and good condition.





# Using Data Where Possible; Reliability Example

**Reliability on FM 1925:** Currently has good performance for reliability.



# Project Scoring

---

- 2 Sample Projects
- Discussion of project
- Individual scoring
- Combination of scoring

# Discussion

---

- Pros of this scoring format
- Cons of this scoring format
- Do these questions address MPO goals?
- What kind of interface would you prefer for scoring?
- Is this a process the TAC wants to be included in?
- What questions should be answered by the LG and what questions should be answered by MPO staff?

# Thank You

---

**JD Allen, AICP, WSO – CSSD,  
TSSP-Rail/Bus, PTSCTP**  
ATG Project Manager  
jdallen@emailatg.com  
(337) 802-6655

**Ben Magallon, AICP, TSSP-Rail**  
ATG Deputy Project Manager  
bmagallon@emailatg.com  
(512) 821-2081